

## NOTICE OF BASIC ASSESSMENT PROCESS AND INTEGRATED WATER USE LICENCE APPLICATION

### PROPOSED DIPHITSHI CLUSTER MINI SCHEME REPAIRS AND REFURBISHMENTS WITHIN THE MOGALAKWENA LOCAL MUNICIPALITY IN THE LIMPOPO PROVINCE

Notice is hereby given in terms of the Amended Environmental Impact Assessment (EIA) Regulations published in Government Notice R326, Listing Notices R324, R325 and R327 of December 2014 and in terms of Section 24 (5) and 44 of the National Environmental Management Act (Act No. 107 of 1998) (NEMA), and Government Notice 19182 of 26 August 1998 of the National Water Act (Act 36 of 1998) (NWA); that the Mogalakwena Local Municipality proposes to repair and refurbish the water network for the Diphitshi, Buffelshoek, Diretsaneng and Kgopeng villages (Collectively the Diphitshi Cluster) in the Limpopo Province.

### DRAFT BASIC ASSESSMENT AND IWULA AVAILABLE FOR PUBLIC REVIEW AND COMMENT

In terms of Government Notice R326, R324, R325 and R327 of December 2014, all interested and/or affected parties (I&APs) are hereby notified that the Draft Basic Assessment Report (DBAR) and Draft Integrated Water Use Licence Application (IWULA) Report for the proposed Diphitshi Cluster Mini Scheme Repairs and Refurbishments in the Limpopo Province is available for public review and comment at the public places indicated below (hard copy), Lidwala Consulting Engineer's website (<http://www.lidwala.com>) and CD upon written request to Lidwala SA. **Please note that the DBAR is available for public review and comment for a period of 30 days from Wednesday, 4 July 2018 to Thursday 2 August 2018 and the IWULA report is available for public review and comment for a period of 60 days from Wednesday, 4 July 2018 to Monday, 3<sup>rd</sup> September 2018 (end of business day):**

Venue	Working Hours	Street Address
Mogalakwena Municipality	07: 45 – 16: 30	54 Retief Street, Mokopane, 0600
Mogalakwena Public Library	07:45 – 17: 00	Van Rieberg Road, Mokopane, 0600
Kgopeng Community center	07: 45 – 16: 30	Kgopeng Village, Mokopane

Should you have any comments on the available draft reports please direct your comments or enquires in writing to the Public Participation Consultants below:

**Bongi Mhlanga**  
**Lidwala SA (Pty) Ltd**

Postnet Suite 328, Private Bag.X21, Bryanston, 2021

Tel: (0861) 543 9252

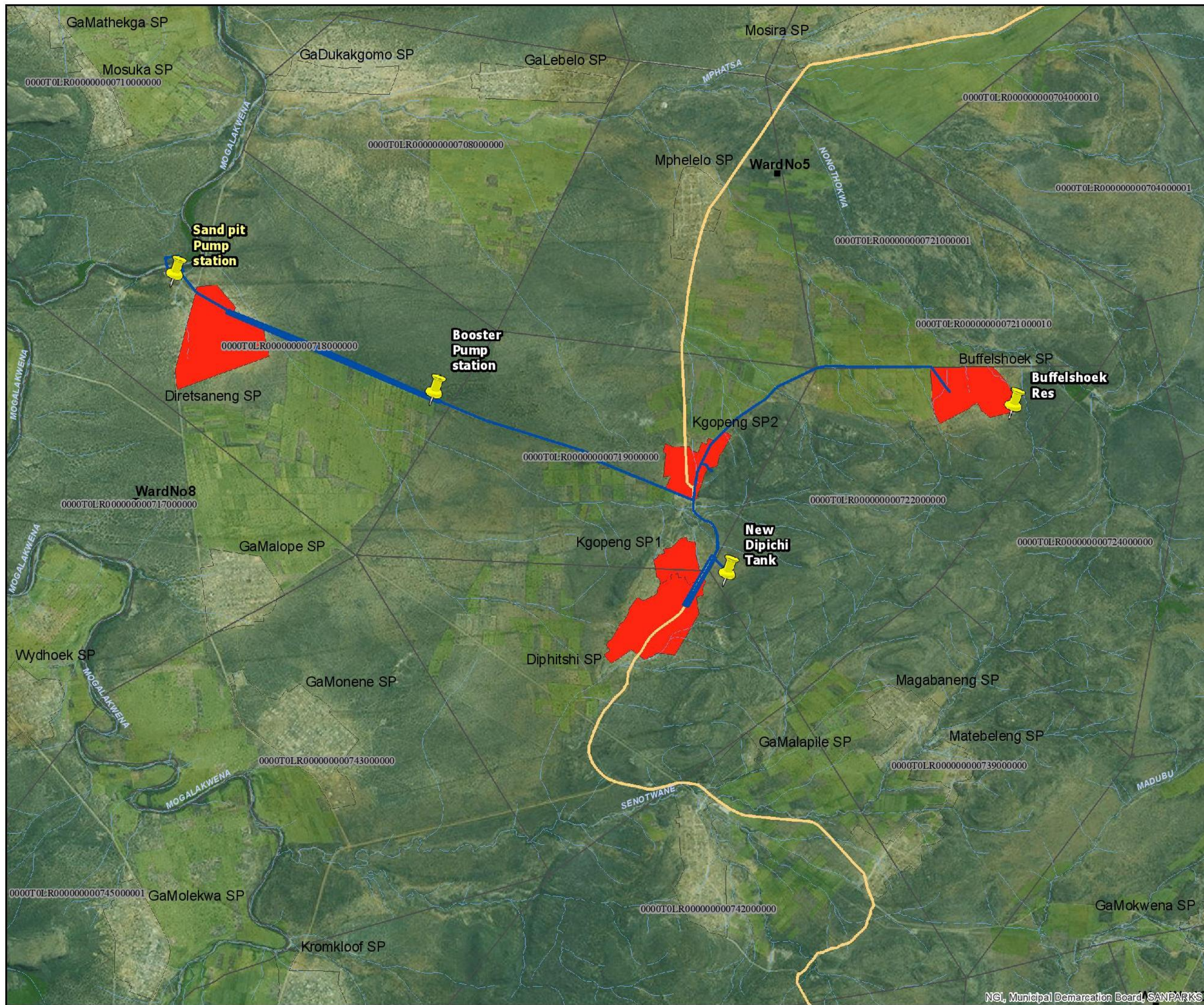
Fax: (086) 764 9282

E-mail: [bmhlanga@lidwala.com](mailto:bmhlanga@lidwala.com)

Website: [www.lidwala.co.za](http://www.lidwala.co.za)



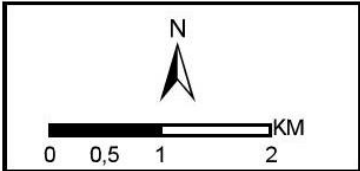




**Mogalakwena  
Locality Map**

**Legend**

- Ward Number
- Alternative
- Roads
- River Lines
- Sub Places
- Farms
- Affected Areas



**Lidwala**  
Specialist Solutions

PRODUCED BY: Lidwala Consulting Engineers  
AUTHOR: Carol Lefakane  
DATE: 2017/07/19