

**BASIC ASSESSMENT PROCESS
AND
INTEGRATED WATER USE LICENSE APPLICATION**



**BASIC ASSESSMENT AND INTEGRATED WATER USE LICENSE APPLICATION FOR THE PROPOSED
MOGALAKWENA LOCAL MUNICIPALITY MINI SCHEME REPAIRS AND REFURBISHMENTS IN THE
LIMPOPO PROVINCE**

BACKGROUND INFORMATION DOCUMENT

WHAT DOES THIS DOCUMENT TELL YOU?

The purpose of this Background Information Document (BID) is to provide Interested and/or Affected Parties (I&APs) with background information about the proposed Mogalakwena Local Municipality Mini Scheme Repairs and Refurbishments in the Limpopo Province. A Basic Assessment (BA) and Integrated Water Use License Application (IWULA) Process will be undertaken for the proposed project. The BID further explains how I&APs can become involved in the project, receive information as the BA progresses, and raise comments and/or concerns regarding the potential impacts of the project on the environment. You are hereby invited to register as an I&AP on the project's database by completing and submitting the attached registration and comments form to the public participation office (see details below).

This BID document will help you to:

- Determine if you are interested in and/or affected by the proposed project;
- Better understand the project in order to be able to provide comments; and
- Understand the environmental authorisation process so that you are able to participate effectively.

WHAT DOES THE PROJECT ENTAIL?

The Mogalakwena Local Municipality proposes to upgrade and refurbish the water network for the Diphitshi, Buffelshoek, Diretsaneng and Kgopeng villages collectively called the Diphitshi Cluster Mini Scheme.

The proposed repairs and refurbishments will consist of the following plan of works:

- 6500m of 160mm uPVC class 25 pumping mains;
- 9000m of 110mm class 12 uPVC gravity mains;
- 440 m³ (9 x 9 x 3 panels) ground storage steel tank at the Booster pump station;
- Elevated 465m³ (8 x 8 x 4 panels) command storage steel tank at Dipichi village;
- 2 pump stations at the Booster pump station and the Sand Abstraction well;
- Installation of valves, bulk meters and all other fittings; and
- Reconfiguration and refurbishment of the existing Sand pit abstraction well.

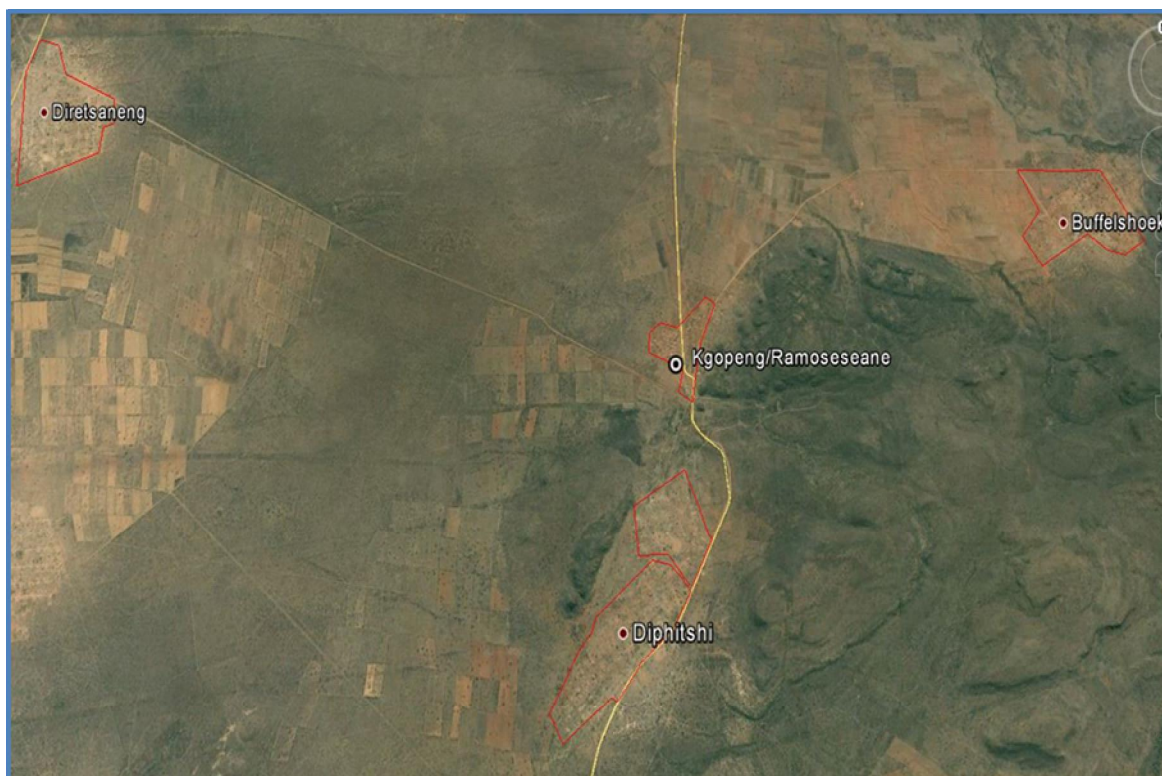


Figure 1: Locality Map of the proposed development area

WHAT ARE THE POTENTIAL ENVIRONMENTAL IMPACTS ASSOCIATED WITH THE PROPOSED PROJECT?

A number of potential environmental impacts associated with the project are anticipated. As part of the BA, these potential impacts will be assessed through the following specialist studies, with the allocated specialists:

Table 1: Specialist Studies

Specialist Study	Organisation and or Specialist Responsible for the Study
Biodiversity Study	Lidwala (SA)
Heritage Study	J A van Schalkwyk
Palaeontology Study	Dr Almond
Surface water/Wetland Study	Afzelia Consulting

As part of the BA Process, specialist studies will identify potential issues which will further be investigated. Input from I&APs through the Public Participation Process (PPP) also provides valuable input in the identification of issues requiring investigation within this BA process.

WHY ARE ENVIRONMENTAL STUDIES NEEDED?

In terms of the Environmental Impact Assessment (EIA) Regulations (2014) and the National Water Act (Act 36 of 1998) (NWA), the Mogalakwena Local Municipality requires authorisation from the Limpopo Department of Economic Development, Environment and Tourism (LEDET) for the

undertaking of the proposed project. The EIA Regulations are published in Government Notice in Government Notice R326, Listing Notices R324, R325 and R327 of 8 December 2014 in terms of Section 24 (5) and 44 of the National Environmental Management Act (Act No. 107 of 1998) (NEMA), the listed activities are set out in Government Notices R324 to R327 and the National Water Act (NWA) activities are listed in GN 19182. In order to obtain an environmental authorisation and the relevant Water Use license for this project, comprehensive, independent environmental studies must be undertaken in accordance with the EIA Regulations.

An EIA is a legislative tool that is used to ensure that potential impacts that may occur due to any proposed development are identified before execution, and can therefore either be avoided or mitigated (minimised). In South African legislation the environment includes social, economic and bio-physical aspects (and their interactions) and the BA process must assess these equitably.

Due to the fact that the proposed project encompasses listed activities in NEMA and NWA, both an Environmental Authorisation (EA) in term of NEMA and a Water Use License (WUL) in terms of NWA is required.

Table 2 below shows the listed activities that are triggered by the proposed project. Should you wish to obtain a detailed description of these activities, please contact the Public Participation office (with details provided below).

Table 2: Listed Activities

NEMA	No. R. 983	12	13	19	27
NWA	GN 19182.	Section 21 (a)	Section 21 (c)	Section 21 (i)	

Mogalakwena Local Municipality has appointed Lidwala Consulting Engineers (SA) (Pty) Ltd, as Environmental Assessment Practitioners (EAP), to undertake the environmental studies to identify and assess all potential environmental impacts associated with the proposed project. As part of these environmental studies, all I&APs are invited to become actively involved through the PPP.

PUBLIC PARTICIPATION PROCESS

It is important that relevant I&APs are identified and involved in the public participation process from the outset of the proposed project. The inputs received from I&APs form an integral part of the BA and IWULA processes and will also assist the decision-making authorities with their decision-making. To ensure effective public participation, the process includes the following steps:

- STEP 1: Advertise the BA and IWULA Process (Posters/BID's/local/community newspaper)
- STEP 2: Register I&APs and key stakeholders on the database (on-going)
- STEP 3: Consultation with, and transfer of information to, I&APs through consultation, public meetings, open days, or focus group meetings
- STEP 4: Record and respond to all comments, issues and concerns raised by I&APs within a comments and response report, which will form an integral part of the BA Reports
- STEP 5: Invite I&APs to comment on the BA Reports (30-day comment period)

HOW CAN YOU GET INVOLVED?

1. By responding (by phone, fax or e-mail) to our invitation for your involvement which will also be advertised in a local newspaper.
2. By mailing, faxing or e-mail the attached comment form to Lidwala SA.
3. By attending the meetings to be held during the course of the project. Should you register as an I&AP you will be invited to attend these meetings. The meeting dates will also be advertised in a local newspaper.
4. By telephonically contacting Lidwala if you have a query, comment or require further project information.
5. By reviewing the BA and IWULA Reports within the 30-day review period and sending your comments to Lidwala (***It should be noted that one can still review the documentation outside this 30-day window***).

If you consider yourself an I&AP for this proposed project, we urge you to make use of the opportunities created by the public participation process to become involved in the process. Your input into this process forms a key part of the environmental studies and we would like to hear from you to obtain your views on the proposed project. Should you wish to register as an I&AP, have any comment, or comments on the proposed project, please contact the public participation office (see details below).

COMMENTS, QUERIES AND RESPONSES

Direct all comments, queries and responses to:


Lidwala Consulting Engineers (SA)

 Postnet Suite 328, Private Bag X21, Bryanston, 2021

ATTENTION:

Bongi Mhlanga

 Phone: (0861) LIDWALA (0861 543 9252)

 Fax: 086 764 9282

 E-mail: bmhlanga@lidwala.com

 Website: www.lidwala.co.za